



## markilux Optional Accessories

**markilux**



## markilux PVC windows

### Awning covers with transparent windows for the markilux 860 and 869

For the vertical tensioned blinds, markilux 860 and markilux 869, we offer awning covers with integrated PVC windows. The material used to make the windows is a transparent UV-resistant foil.

Window	Dimensions (mm)
maximum height	2000
maximum width	1070

The maximum quantity of windows per cover can be deduced from the cover width and the number of full panel widths. Windows are only inserted into full panel widths.

Position	Minimum measurements (mm)
top/bottom	250
sideways to the seam	50
between the windows	100

The awning cover must be made of acrylic or sunsilk material stitched or bonded together in panels (no widely woven fabrics).

#### Important note:

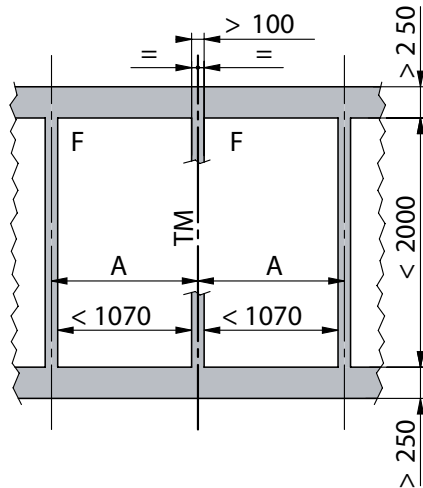
Because different materials are being joined this can lead to differences in tension between the two materials which may cause winding creases and puckering near the seams.

Moisture on the foil can lead to a change in the chemical properties of the plasticising agent, which may lead to the foil becoming cloudy. The influence of heat and rolling the material up when damp may exacerbate this effect. Consequently it is to be recommended that any moisture on the foil be allowed to evaporate before the blind is retracted. Given time the cloudiness in the foil may disappear again. However, because of wide variations in climate conditions, no guarantees can be given in this regard.

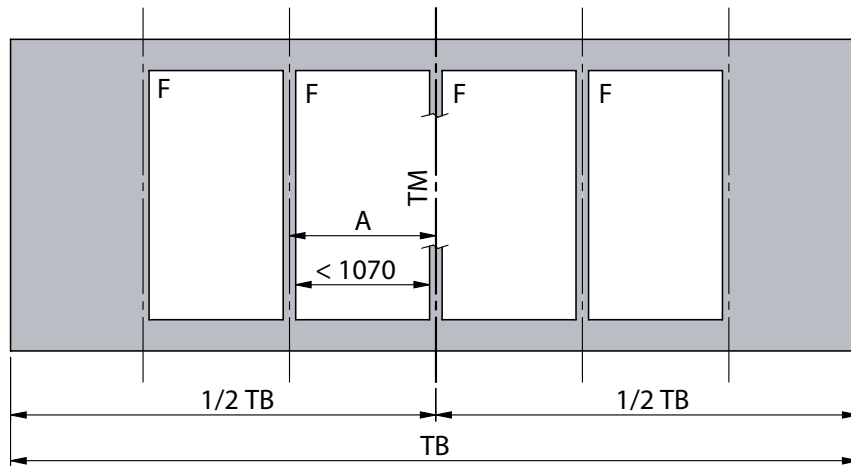
*Please inform your customers that it is not possible - given current technology - to prevent this phenomenon occurring and that it is no cause for complaint.*

**Dimensions:**

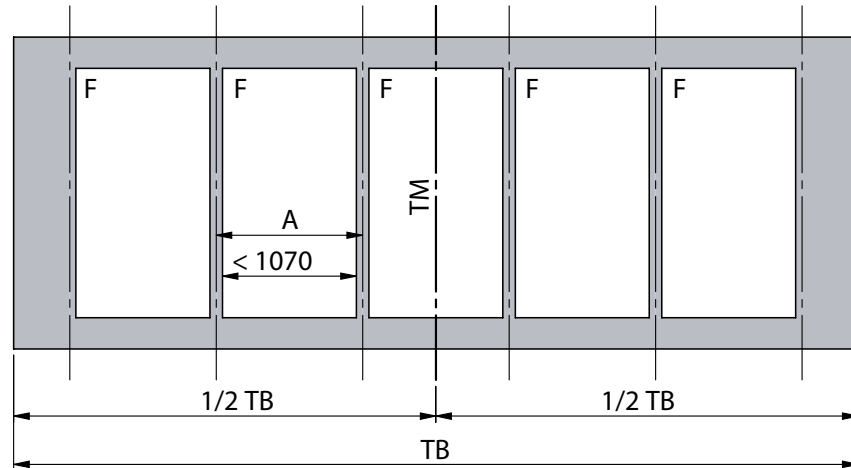
Overview of the dimensions of a standard window



Overview of the dimensions of a cover with central seam



Overview of the dimensions of a cover with central panel



- TB = cover width
- TM = centre line of the cover
- A = distance from centre seam to centre seam
- F = PVC window
- < = smaller or equal to
- > = larger or equal to

dimensions in mm





## markilux Signwriting

### Signwriting on covers and valances

Valances and awning covers offer an ideal area to display your advertising or sponsoring.

Apart from the bespoke printing options, three standard processes are possible:

- stencil printing
- thermo-transfer printing
- digital printing

Please send us your lettering or logo. We will be pleased to make you an individual offer for colour as well as for monochrome printing.

#### 1. Template printing (for valances and covers):

- high quality and durable textile signwriting for large valances and covers
- extremely durable - three applications of colour
- very good light fastness and resistance to UV (light fastness 7-8)
- the signwriting is applied manually using several stencils, which are made by hand
- all the fonts offered by Microsoft Word are available

#### 2. Thermo-transfer printing (only for valances):

- the less expensive alternative for smaller budgets and short to medium term advertising campaigns
- the signwriting is applied using a thermal transfer process
- limited light fastness
- less durable than the stencil process

#### Overview of the colours available in thermo-transfer printing in the fonts offered by Microsoft Word:

traffic white - RAL 9016	gentian blue - RAL 5010
traffic yellow - RAL 1023	sky blue - RAL 5015
bright red orange - RAL 2008	turquoise green - RAL 6016
sapphire blue - RAL 5003	window grey - RAL 7040
signal blue - RAL 5005	signal black - RAL 9004

#### 3. Digital printing (for large areas and covers):

- the new printing technique offering unlimited possibilities
- ideal for large areas and detailed images
- realistic representation of logos and photos, just about anything is possible
- digital files must be submitted in PDF/X-3 or TIFF format, other formats may be possible so please ask us
- optimum printing quality at a resolution of at least 70-100 dpi
- printed on white acrylic awning fabric or on request on Soltis material
- we recommend that the un-printed white edges, which appear as a result of discrepancies between the size of the picture and the cover, be filled with a plain colour

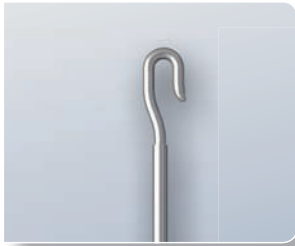
Colours similar to the RAL chart - these may differ slightly from those depicted in both hue and finish.

## Stainless steel winding handle

### Get to grips with real markilux quality

The markilux stainless steel winding handle, which is supplied with awnings that have a gearbox, marries timeless elegance with quality that you can see and touch.

The low-noise bearings and the ergonomically shaped grips make it impossible not to notice the quality when operating the awning.

markilux  
Collection

Specification

markilux  
710 / 810markilux  
720 / 820markilux  
725 / 825markilux  
750 / 850

## Automatic controls, Switches, Accessories



### Light and wind sensor Soliris Uno

Depending on the prevailing conditions with regard to the wind and sun **one** markilux awning will be extended or retracted. The wind speed and lux value required to do this is set directly at the sensor. There is a sliding switch which can quite simply deactivate the light sensor. The awning can then be controlled manually.

order no. 8272081

markilux  
760 / 860markilux  
730 / 830markilux  
791/891

### Light and wind sensor Soliris IB

Depending on the prevailing conditions with regard to the wind and sun **several** markilux awnings will be extended or retracted. The wind speed and lux value required to do this is set directly at the sensor. There is a sliding switch which can quite simply deactivate the light sensor. The Soliris IB is designed to work with a group control unit (each drive unit requires an additional motor control mechanism), whereby each individual control mechanism is connected to a bus system (IB Bus).

order no. 8272082

markilux  
740 / 840markilux  
745 / 845

### Rain sensor for the light and wind sensor Soliris Uno or Soliris IB

Electrically powered sensor, which uses two non-corroding sensing electrodes to detect rain and snow. The rain sensor must be connected to the pre-installed light and wind sensor Soliris Uno or Soliris IB.

order no. 8272065

markilux  
893markilux  
869Optional  
Accessories

## Optional Accessories



### Individual motor control mechanism Centralis Uno IB (small group control mechanism)

A motor control mechanism Centralis Uno IB is required for every drive unit that is to be controlled. The sliding switch makes it quite simple to remove an awning from the central control system. Individual operation is therefore possible at any time. Two intermediate positions can be set. Warning signals are displayed by LED (e.g. awning retracted because the wind speed is too high).

order no. 8272085



### Surface fixture switch frame

Surface fixture switch frame (switch is not included), single, Jung LS 981 A WW, for the surface installation of operating switches in conjunction with the Soliris Uno, Soliris IB and Centralis Uno IB.

dimensions approx. 78 x 78 x 40 mm (L x B x H)

order no. 8272027, alpine white



### Cut-off relay

Cut-off relay (230 V, 50 Hz), for surface fixture, for the control of up to 4 motor drives with mechanical or electronic limit switching. The cut-off relay prevents the motor drives from being linked in parallel, which is not permitted.

order no. 8272187



### Somfy universal set-up switch

For the setting-up of 230 V motors, for RTS or WT motors and also for Becker and Elero motors.

order no. 8271084



### Protective box for connecting plug (Hirschmann)

Protective box to tidy away the connecting plug near the awning.

dimensions 45 x 35 x 175 mm (width x depth x length)

order no. 8271044, white

order no. 8271043, black

order no. 8271045, light grey

### Power cable, 5 metres long for hard-wired motors (not illustrated)

The power cable is pre-installed in the factory, without a mains plug and without connecting plug (Hirschmann).

order no. 8271018 Somfy motor drives

order no. 8271067 Elero motor drives

order no. 8271115 Becker motor drives

## Radio Controls 433 MHz



### markilux hand-held remote control (1 channel)

The markilux hand-held remote control (1 channel) allows you to operate your awning comfortably at the touch of a button. The attractive shape and ergonomic design characterise this elegant and easily operated hand-held remote control.

order no. 8272130



### markilux hand-held remote control (4 channel)

This markilux radio remote control (4 channel) allows you to control the awning itself as well as the light and wind function and the dimmer function on awnings with lighting at the touch of a button. The attractive shape and ergonomic design characterise this elegant and easily operated hand-held remote control unit.

order no. 8272131



### Radio control wallset Centralis RTS (1 channel)

Radio control wallset for effortless awning control at the touch of a button, with the surface switch frame Jung 981 and cover plate (matching the surface switch frame Jung LS 990 and CD 500).

order no. 8272092, alpine white



### Radio control light and wind sensor Soliris Sensor for RTS motors

Depending on the prevailing wind and sun conditions the awning or awnings are extended or retracted. The values for the wind and lux sensors are set at the central control unit. The Soliris Sensor RTS transmits the signals by radio wave. This does away with all the wiring to the central control unit and the motor drive. The light sensor can be manually activated or deactivated by means of a remote control.

order no. 8272089



### Radio control sun and wind sensor Soliris Sensor for RTS motors with a connection for a rain sensor

Depending on the prevailing wind and sun conditions the awning or awnings are extended or retracted. The values for the wind and lux sensors are set at the central control unit. In combination with a suitable rain sensor (order no. 8272065) the awning or awnings will retract if it starts to rain. The Soliris Sensor RTS transmits the signals by radio wave. This does away with all the wiring to the central control unit and the motor drive. The light sensor can be manually activated or deactivated by means of a remote control.

order no. 8272127

markilux Collection

Specification

markilux 710 / 810

markilux 720 / 820

markilux 725 / 825

markilux 750 / 850

markilux 760 / 860

markilux 730 / 830

markilux 791/891

markilux 740 / 840

markilux 745 / 845

markilux 893

markilux 869

Optional Accessories

Technical Information

## Optional Accessories



### Rain sensor for Soliris light and wind sensor

Electrically powered sensor, which uses two non-corroding sensing electrodes to detect rain and snow. The rain sensor has to be linked to a pre-installed light and wind sensor Soliris Sensor RTS.

order no. 8272065



### Radio control wind sensor Eolis Sensor RTS

Keeps a constant eye on the wind speed: as soon as the individually pre-set value is exceeded, the sensor retracts the awning. Radio control operation makes wiring between the operating point and the motor drive unnecessary. Only a 230 V power supply cable is required.

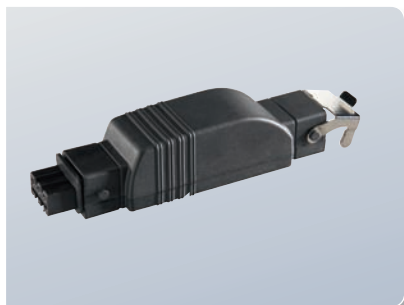
order no. 8272090



### Radio control light sensor Sunis WireFree RTS

Solar cell operated light sensor - which can be fitted anywhere on the façade. For awnings with 433 MHz RTS motors, does not need to be wired into the mains. It draws its power from the sun via a built-in solar cell. Up to three Sunis light sensors can be linked to any one radio-controlled motor. But one Sunis light sensor can also operate a number of radio-controlled motors.

order no. 8272141



### External receiver Universal Slim Receiver RTS Plug as an in-line solution

The easy way to retrofit radio-controlled operation to an awning with hard-wired motor or provide an RTS automatic control option (light, wind, rain sensor). Quick and easy installation between the motor and the power supply cables (via the Hirschmann connecting plug). The following is then possible:

- individual operation, i.e. a single radio remote control operates a single receiver
- Group operation, i.e. a single radio remote control operates more than one receiver
- multiple operation, i.e. more than one radio remote control operate a single receiver

order no. 8272148